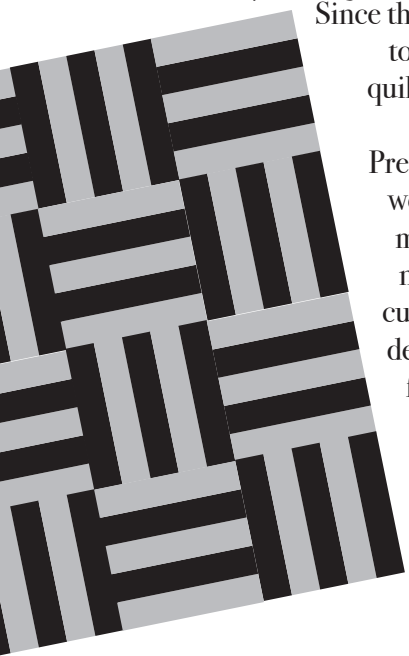


Stacy Michell was thinking about teaching a beginning quilting class. This class would make a basic block "The Rail Fence". It was a great place to learn how to cut long strips, and sew long straight lines. It was a super hot trend 35 years ago, when the rotary cutter was new.



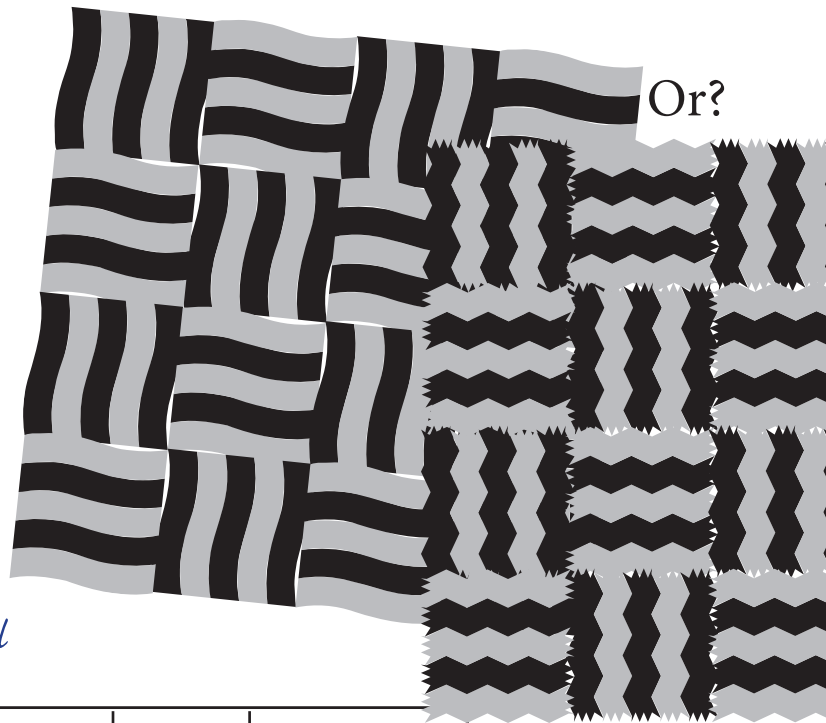
Since then, we have some other amazing tools that have been introduced to quilting, like Clover™ scissors, die cutting machines and SoftFuse Premium™, a paper backed fusible web. These tools are used often in my studio. Something else we did not have, when we first got rotary cutters, were computers to help us design. After making the basic rail fence graphic, just for fun, it was twisted & zig-zagged in Adobe Illustrator.

WOW!! FUN!!!
But, is that patchwork, or appliqué, or...

"Twice as Nice Quilting"

The best of Patchwork and Appliqué, together.

By Stacy Michell



<http://www.shadestextiles.co/twiceasnice.html>



Winter/Spring 2016 brochure

For the full story, scan.



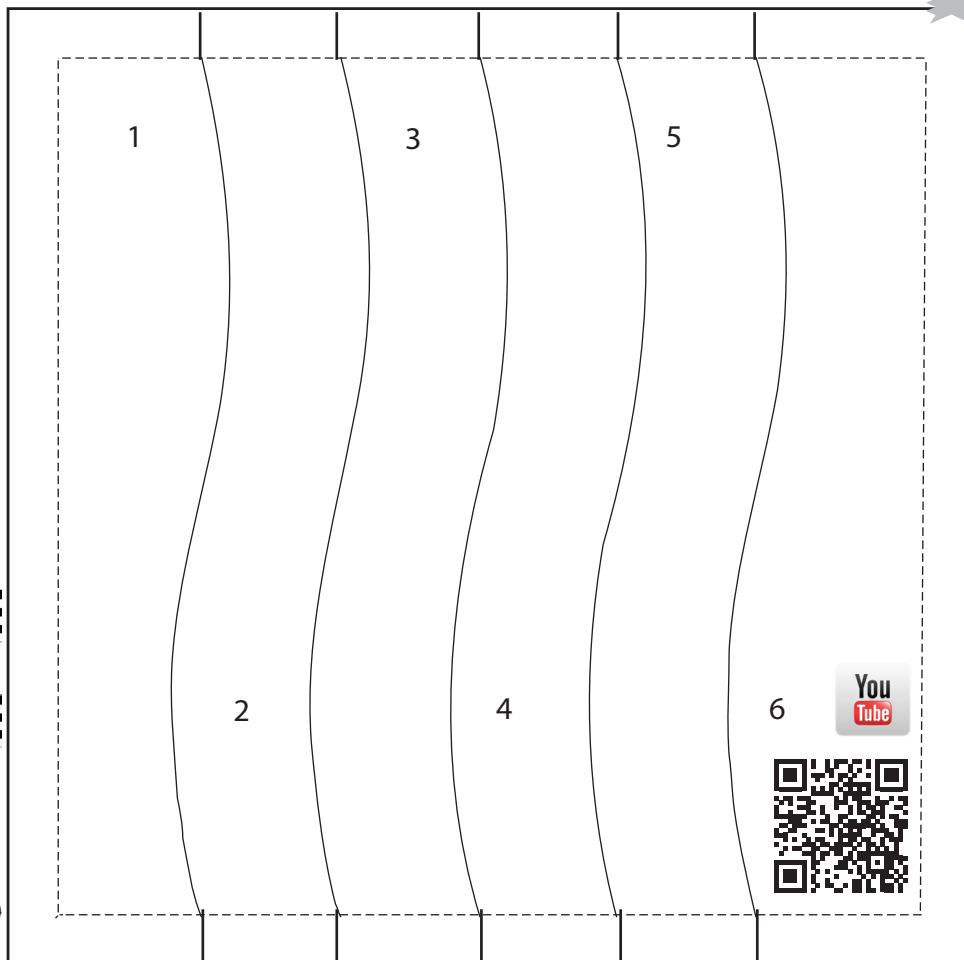
Stacy Michell
ShadesTextiles.CO
ShadesTextiles.JP

Waving Neighbors



Visit Web site for alternate layout ideas for "Waving Neighbors"

A free pattern designed to show the possibilities of "Twice as Nice Quilting"



For a 4.5 in. finish:
Cut pieces of SoftFuse Premium to 4.75 - 5 inch pieces to fit neatly within 5 inch pieces of fabric.
OR Watch the video for fusing larger pieces and cutting down.

Cut applique fabric to 5 inch squares, center the fusible on the back of fabric, and fuse.

Leave the backing on. Take paper pattern and position on top of 1- 4 layers of fused fabric, and cut. Cut on the line.

ONLY on the solid line.
B. Cut Twice as many 5 inch squares for backgrounds. This should be a contrasting color. Fuse #2,#4,& #6 to half of the background pieces.

Fuse #1, 3, 5 to the other half.

This makes 8 blocks. Finish the edges with a decorative stitch. Assemble the blocks. Assembly is very easy, since it is just sewing together squares.